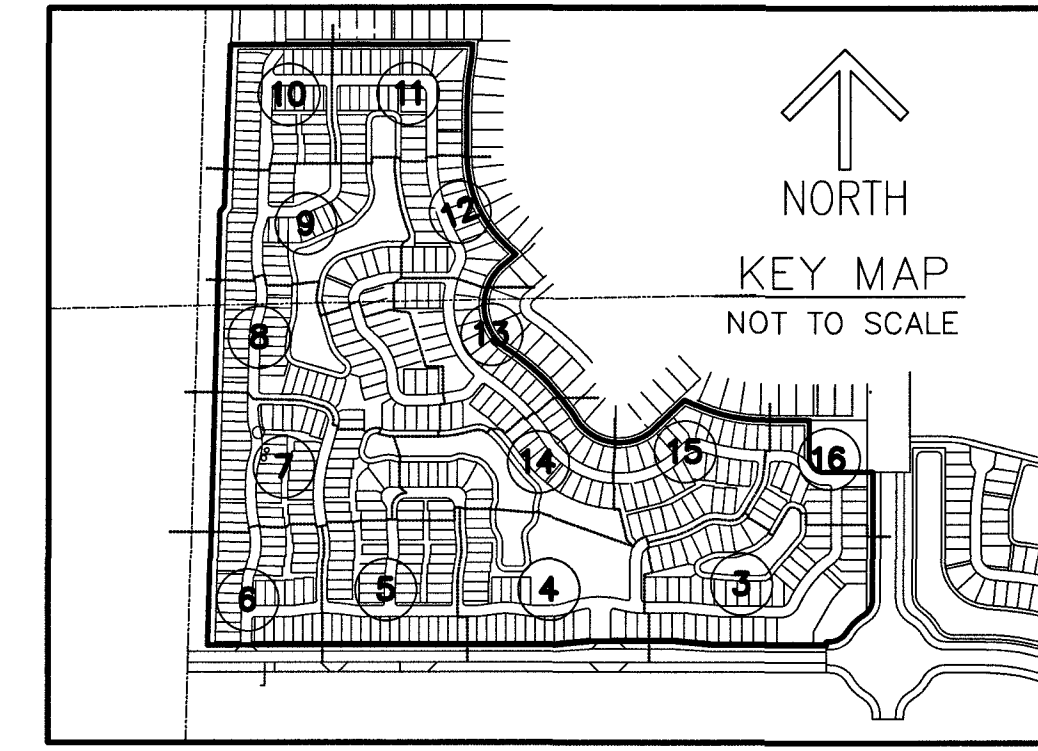


THIS INSTRUMENT PREPARED BY
RONNIE L. FURNISS
OF
CAULFIELD and WHEELER, INC.
SURVEYORS - ENGINEERS - PLANNERS
7900 GLADES ROAD, SUITE 100
BOCA RATON, FLORIDA 33434 - (561)392-1991
CERTIFICATE OF AUTHORIZATION NO. LB3591
SEPTEMBER 2023

AVENIR - POD 16

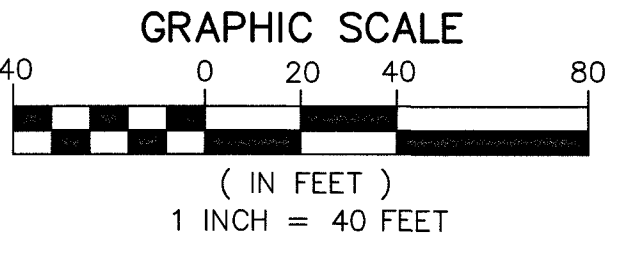
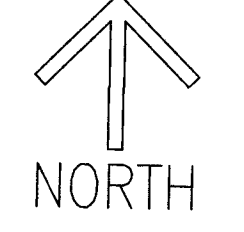
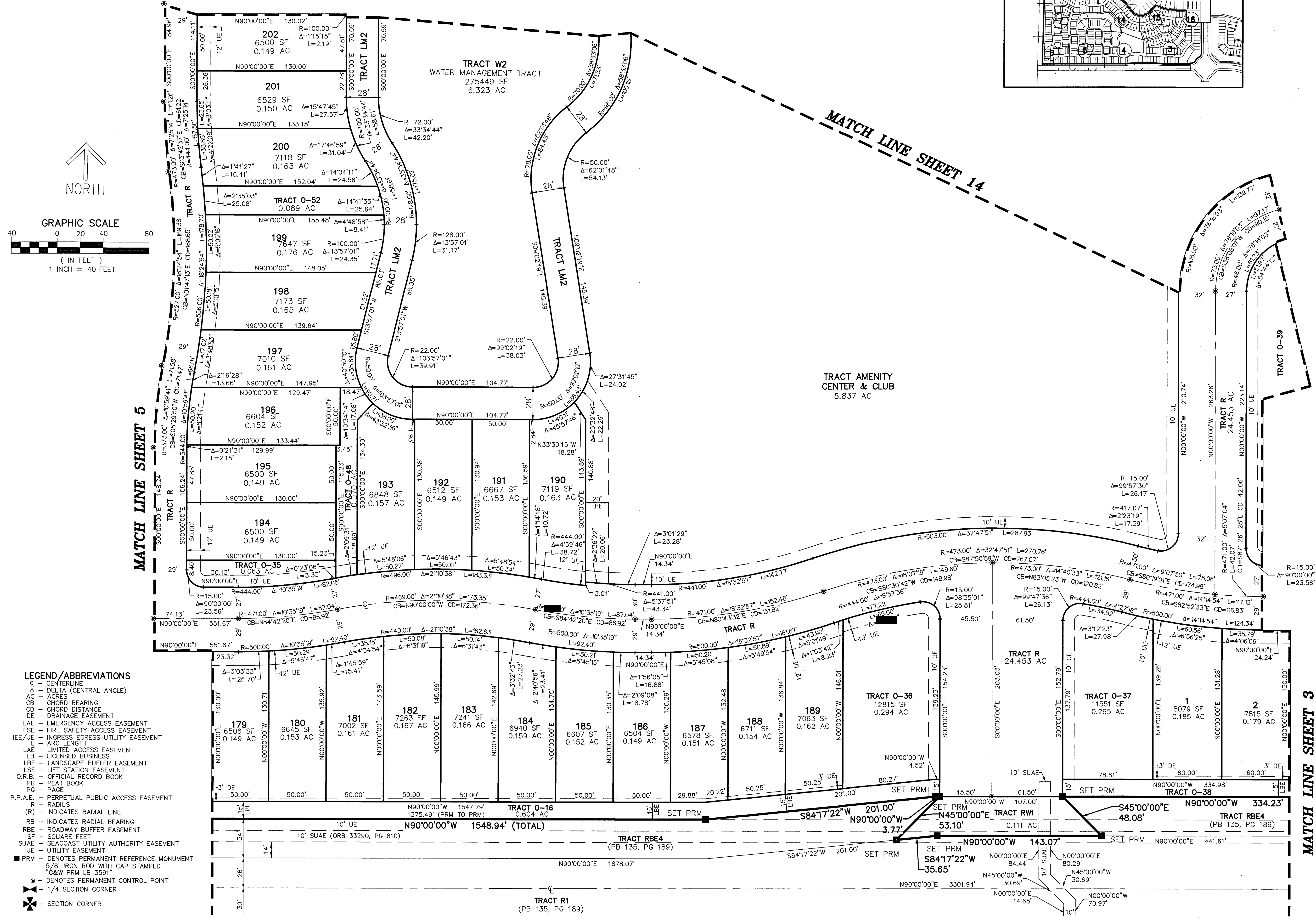
BEING A REPLAT OF A PORTION OF PARCEL A-1, AVENIR, AS RECORDED IN PLAT BOOK 127 PAGE 85, TOGETHER WITH A PORTION OF TRACT RBE 6, AVENIR - POD 15, AS RECORDED IN PLAT BOOK 134 PAGE 179, TOGETHER WITH A PORTION OF TRACT 4, AVENIR - SPINE ROAD 6, AS RECORDED IN PLAT BOOK 135 PAGE 189, ALL OF THE PUBLIC RECORDS OF PALM BEACH COUNTY, FLORIDA LYING IN SECTIONS 8 AND 9, TOWNSHIP 42 SOUTH, RANGE 41 EAST, CITY OF PALM BEACH GARDENS, PALM BEACH COUNTY, FLORIDA.



171

STATE OF FLORIDA
COUNTY OF PALM BEACH
THIS PLAT WAS FILED FOR
RECORD AT _____ M.
THIS _____ DAY OF _____
A.D. 2023, AND DULY RECORDED
IN PLAT BOOK _____ ON
PAGES _____ THROUGH _____
JOSEPH ABRUZZO
CLERK OF THE CIRCUIT COURT
AND COMPTROLLER
BY: _____
DEPUTY CLERK

SHEET 4 OF 16



- LEGEND/ABBREVIATIONS**
- ⊙ - CENTERLINE
 - Δ - DELTA (CENTRAL ANGLE)
 - AC - ACRES
 - CB - CHORD BEARING
 - CD - CHORD DISTANCE
 - DE - DRAINAGE EASEMENT
 - EAE - EMERGENCY ACCESS EASEMENT
 - FSE - FIRE SAFETY ACCESS EASEMENT
 - IEE/UE - INGRESS EGRESS UTILITY EASEMENT
 - L - ARC LENGTH
 - LAE - LIMITED ACCESS EASEMENT
 - LB - LICENSED BUSINESS
 - LBE - LANDSCAPE BUFFER EASEMENT
 - LSE - LIFT STATION EASEMENT
 - O.R.B. - OFFICIAL RECORD BOOK
 - PB - PLAT BOOK
 - PG - PAGE
 - P.P.A.E. - PERPETUAL PUBLIC ACCESS EASEMENT
 - R - RADIUS
 - (R) - INDICATES RADIAL LINE
 - RB - INDICATES RADIAL BEARING
 - RBE - ROADWAY BUFFER EASEMENT
 - SF - SQUARE FEET
 - SUAE - SEACOAST UTILITY AUTHORITY EASEMENT
 - UE - UTILITY EASEMENT
 - - PRM - DENOTES PERMANENT REFERENCE MONUMENT
5/8" IRON RD WITH CAP STAMPED
C&W PRM LB 3591"
 - - DENOTES PERMANENT CONTROL POINT
 - ⊙ - 1/4 SECTION CORNER
 - ⊕ - SECTION CORNER